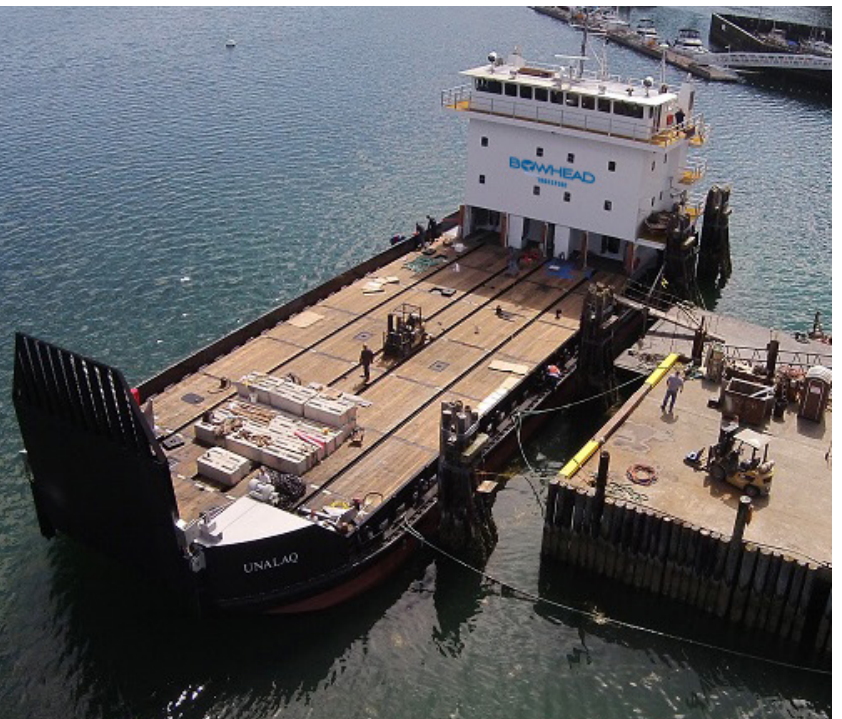




Serving Alaskan Arctic waters
with pride for over 37 years.



Bowhead Transport Company, LLC is a subsidiary of Ukpeaġvik Iñupiat Corporation (UIC) Industrial Marine & Environmental division, providing specialized vessel charter services and commercial cargo transport between Seattle, Southeast Alaska, Western Alaska and the Alaska North Slope performed with our specialized vessels capable of shallow water operation and beach landings.

As an Alaska Native Corporation (ANC), we offer a unique, flexible, and streamlined sole source procurement option to our Government customers. Available through all SBA-certified 8(a) subsidiaries within the UIC family of companies, sole source contracting with UIC Qayaq Marine provides the Government with Federal Acquisition Regulations (FAR) and Code of Federal Regulations (CFR) provisioned methods to maximize performance flexibility, mission continuity, and small business goal achievement.

By providing dependable Arctic cargo transportation we've built long-term relationships with global industries and logistics leaders.

Key Capabilities

- Freight / Cargo / Equipment Transport
- Construction project mobilization, and demobilization
- Remote Lodging / Dining and Project Support Services
- Ligherage Services
- Oilfield Support Services
- Open Ocean and Near Shore Geo Survey Work
- Fiber Optic Cable Installation
- Sea Floor Mapping

CONTACT

Captain Chris Palle

General Manager

Mobile: (541) 905-5204

Local: (907) 677-5260

Email: Christopher.Palle@Bowhead.com

6700 Arctic Spur Road, Anchorage, Alaska 99518

www.bowheadtransport.com



INDUSTRIES WE SERVE

- Federal Government
- Oil and Gas Industry
- Construction Industry
- Coastal Communities of Alaska
- Marine Science
- Technology Industry

COMPANY INFORMATION

SBA Category: Alaska Native Corporation

CAGE Code: 4F6N7

DUNS: 626979541

ASSOCIATED CERTIFICATIONS



UKPEAĠVIK IÑUPIAT
CORPORATION

A MEMBER OF THE UKPEAĠVIK IÑUPIAT CORPORATION FAMILY OF COMPANIES



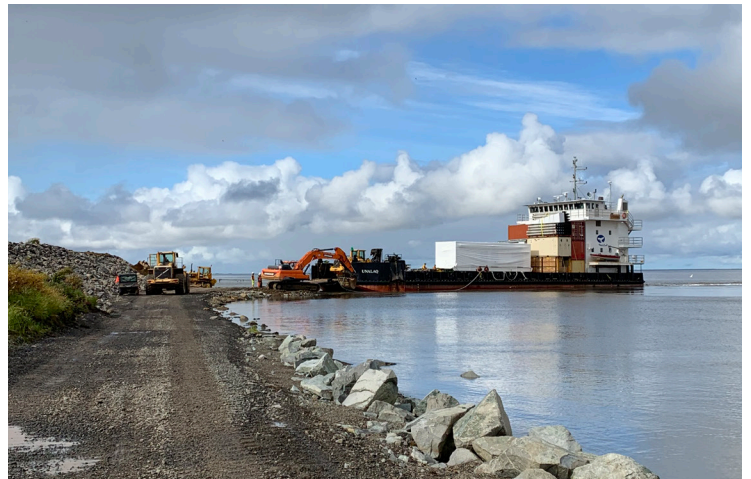
The 4,950 square foot cargo deck is rated for a freight capacity of approx 400 tons with the deck strength to support 1,000 pounds per square foot.



Deck equipment includes a mastred Volvo 220 with lifting capabilities of 55K lbs, a mastred 966 loader with lifting capabilities of 20K lbs and a D6 Dozer.



An aerial view of the M/V Unalag on one of many trips to Mertarvik, Alaska during the 2018/2019 construction to accommodate the residents of a neighboring village being evacuated due to rising water levels.



M/V Unalag at the barge landing in Mertarvik, Alaska, dropping off a new power module, equipment and supplies.



With our 5 foot load-line draft, the Unalag is capable of operation in shallow rivers, bays and estuaries.



Other important equipment for the Unalag includes an 18' rigid hull inflatable skiff used for close-quarters position of the main vessel as well as ship to shore transport when needed.



Comfortable sleeping accommodations and bathroom/shower facilities for crew and 10 passengers. Additional modular housing can be placed on-deck providing accommodations for an additional 16 passengers.



Plenty of storage for crew and passenger's belongings as well as desks and inner-ship communication phones.



Laundry services on board.



Complete with satellite, routers and cellular communication capabilities and a flat screen television, the galley provides the comforts of home for passengers and crew.



The commercial galley consists of a full kitchen that includes a stove, several refrigerators, freezers, dishwasher, sinks, food warming servers and even a deep fat fryer.

M/V UNALAQ Specifications

- Shallow draft landing craft built new in 2014 by Nichols Brothers Boat Builders Length: 150', Beam: 50', Loadline Draft: 5', 5"
- USCG and ABS Inspected / Certified
- Passenger accommodations for 10 guests in 5 state rooms, (Can be increased to 26 utilizing deck housing mods)
- Crew accommodations for 4 - 6 crew in 4 staterooms
- Commercial galley with dining / seating for 20 guests
- Speed: 8kt
- Freight capacity: 400 tons
- Deck cargo space: 4,950 SQ FT
- Deck strength: 1,000 lbs per square foot
- Bow ramp: 27' long & 24' wide
- Engines: Three Tier 3 CAT C-18
- Boom crane: 32 foot, 20,000 lbs load capacity
- Two 2,365lb anchors with 6 Shots 1 1/4" chain
- Fuel oil capacity: 63,660 gallons
- Potable water capacity: 5,305 gal.
- Water maker capacity: 600 gal. / day (Can be increased to 1200 gal. / day)
- At-sea endurance: Approximately 50 days running a 24 hr per day operation

Bowhead Transport also has a fleet of smaller, specialized, shallow-draft coastal and river lighterage vessels available to customers for their marine needs.



M/V Doctor Island: 32' Munson landing craft with twin, 330hp Volvo diesels.



M/V Crescent Island: 26' Munson landing craft with twin, 225hp Volvo diesels.



Experienced crew members are licensed to meet all safety and client expectations.

Bowhead Transport, LLC was named for the great Bowhead whale which has been a time-honored traditional source of valuable sustenance to the Inūpiat people for thousands of years.

Like our shareholders who created our parent company UIC, Bowhead holds to strong, traditional values that are at the core of our business principals.

Respect for our customers, a deep moral obligation to provide outstanding service that goes beyond expectation, and to provide that service at a fair and reasonable price.