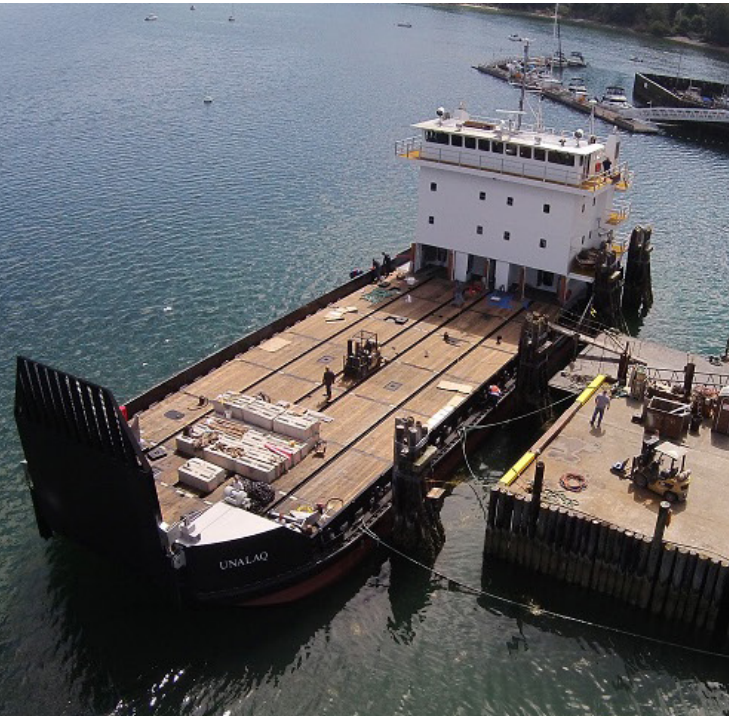


FACT SHEET



QAYAQ MARINE TRANSPORTATION, LLC Serving the Arctic and Northwest



M/V UNALAQ SPECIFICATIONS

- Horsepower: 1,800 at 1,800 rpm
- Gross tonnage: 196 (GRT)
- Class: ABS Loadline
- Service: USCG Inspected Freight Service
- Built by: Nichols Brothers Boat Builders, Langley, WA
- Crew: 4-6, Berths: 16
- Dimensions:
 - Length: 150'
 - Beam: 50'
 - Depth: 8'
 - Loadline Draft: 5 feet, 1 ½ inches
- Speed:
 - Light draft: 9 knots (approx)
 - Loaded: 8 knots (approx)
- Communications & Navigation:
 - VHF, SSB radios, Inmarsat-C satellite, cellular telephone,
 - 2 Furuno 3 cm RADAR, AIS and more
- Cargo Handling Features:
 - Freight capacity: 450 tons approx.
 - Deck cargo space: 4,950 SQ FT
- Deck strength: 1,000 lbs per square foot
- Bow ramp: 27' long & 24' wide
- Engines: Three CAT C-18
- Reduction Gear: Twin Disc MGX5135 2.57:1
- Generators: Two John Deer 99KW
- Anchor Winch:
 - Two 2,365 lb. HHP Poole Anchors.
 - 15 shots- 1 ¼ inch chain
- Boom Crane:
 - One North Pacific MCF 2532
 - 32 foot, 20,000 lbs load capacity
- Push Gear: Two Schuyler 10'x8' push knees
- Fuel Oil Capacity: 63,660 gallons
- Lube Oil Capacity: 2,357 gal.
- Potable Water Capacity: 5,305 gal.
- Water Maker Capacity: 600 gal. /day
- Ballast Water Capacity: 210,054 gal.
- At Sea Endurance: 50 days

CAPABILITIES

- ABS certified
- Shallow draft vessels
- Marine Cargo Transportation
- Barge & Lighterage Services
- Oilfield Support Services
- Logistics
- Vessel Leasing & Operations

M/V UNALAQ STATS

- Built: 2014
- Official #: 9765732
- Call Sign: WDH5909
- MMSI: 338718000

COMPANY INFORMATION

- CAGE Code: 4F6N7
- DUNS: 626979541

ASSOCIATED CERTIFICATIONS





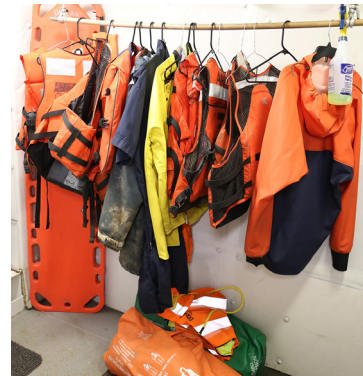
Deck equipment includes a masted Volvo 220 with lifting capabilities of 55K lbs, a masted 966 loader with lifting capabilities of 20K lbs and a D6 Dozer.



The 4,950 square foot cargo deck is rated for a freight capacity of approx 450 tons with the deck strength to support 1,000 pounds per square foot.



Standard Coast Guard required safety gear includes but not limited to life slings, escape ladders, life rings, life vests, fire alarms.



Additional safety equipment includes wet dry suits, survival suits, mobile phones and radios, fire extinguishers and fire suppression systems, smoke and gas detection systems.



Other important equipment for the Unalaq includes a 18' rigid hull inflatable skiff used for close-quarters position of the main vessel as well as ship to shore transport when needed.



The ship's lifeboat is a 16' skiff with a 40hp outboard motor which can be hoisted down to the water by a swing-out davit. The lifeboat is fully equipped with all necessary, Coast Guard approved gear.



The galley consists of a full kitchen that includes a propane stove, several refrigerators and freezer, dishwasher, sinks, food warming servers and even a deep fat fryer.



There is an oven and lots of storage space for cooking utensils, plates, bowls, silverware, etc. There is also the all important coffee maker.



With seating for 18 or more, the galley serves as a meeting area as well as a dining area.



Complete with communications capabilities and a flat screen television, the galley provides the comforts of home for passengers and crew.



Comfortable sleeping accommodations and bathroom/shower facilities for crew and 16 passengers.



Plenty of storage for crew and passenger's belongings as well as desks and inner-ship communication phones.



Washer and dryer on board.