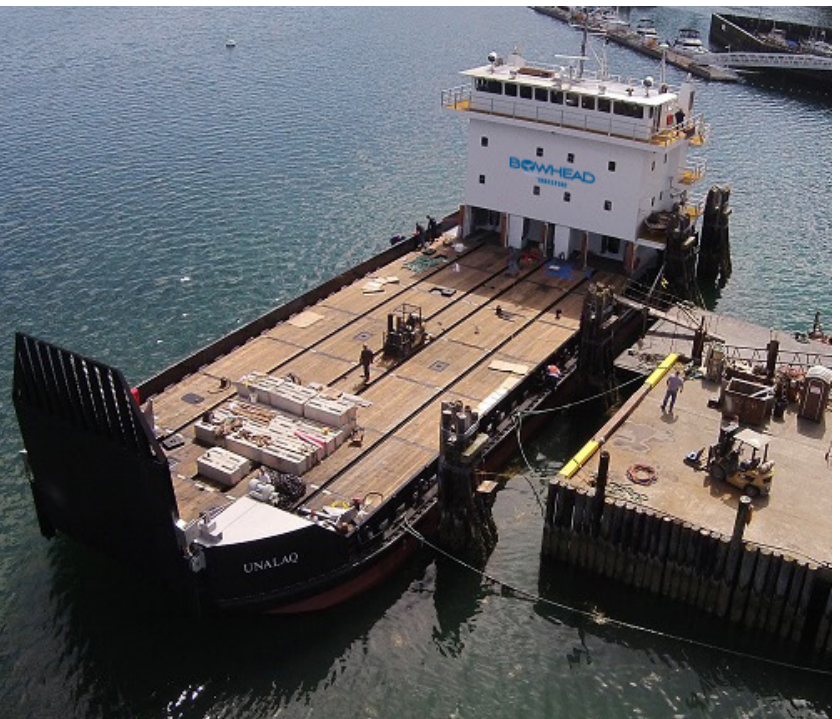




Serving Alaskan Arctic waters
with pride for over 37 years.



Bowhead Transport Company, LLC is a Marine Common Carrier subsidiary of Ukpeaġvik Iñupiat Corporation (UIC) Industrial Marine & Environmental division, providing terminalling services, less than container load (LCL) consolidation, vessel chartering and commercial ocean deck barge cargo transport between Seattle, Western Alaska and the Alaska North Slope. Cargo operations in Alaska are performed with seasoned staff and very shallow draft specialized lighterage vessels capable of beach landings and roll-on/roll-off heavy equipment. Bowhead can rightsize barge operations anywhere on the U.S. West Coast and Alaska.

By providing dependable Arctic cargo transportation we've built long-term relationships with global industries and logistics leaders.

Key Capabilities

- Shallow draft vessels
- Marine Cargo Transportation
- Barge & Lighterage Services
- Oilfield Support Services
- Logistics & Marine Support
- Vessel Leasing & Operations
- Remote site freight & crew transport
- Rig moves
- Hazardous materials & waste shipping
- Scrap metals hauling
- Seattle terminalling services

- Container leasing
- Construction project mobilization, demobilization & freight service

Industries we serve

- Federal Government
- Oil and Gas Industry
- Construction Industry
- Coastal Communities of Alaska
- Marine Science
- Technology Industry

CONTACT

Captain Chris Palle
General Manager
Mobile: (541) 905-5204
Local: (907) 677-5213

Email: Christopher.Palle@Bowhead.com
6700 Arctic Spur Road, Anchorage, Alaska 99518
www.bowheadtransport.com



CAPABILITIES

- ABS certified
- Shallow draft vessels
- Marine Cargo Transportation
- Barge & Lighterage Services
- Oilfield Support Services
- Logistics
- Vessel Leasing & Operations

COMPANY INFORMATION

CAGE Code: 4F6N7

DUNS: 626979541

SBA Category: Alaska Native Corporation

ASSOCIATED CERTIFICATIONS



**UKPEAĠVIK IÑUPIAT
CORPORATION**

A MEMBER OF THE UKPEAĠVIK IÑUPIAT CORPORATION FAMILY OF COMPANIES

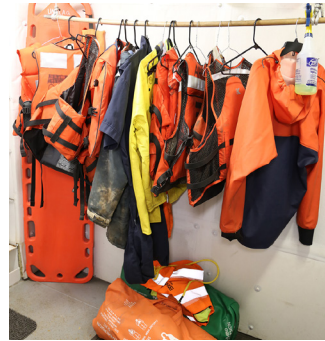
As a Vessel Operating Common Carrier, Bowhead has a shallow draft Landing Craft, the M/V Unalag, built in 2014, to facilitate our lighterage operations. Combined with our all-terrain forklift loaders, the lighterage/beach operators can off-load cargo directly to the beach for delivery to customers.



The 4,950 square foot cargo deck is rated for a freight capacity of approx 450 tons with the deck strength to support 1,000 pounds per square foot.



Deck equipment includes a masted Volvo 220 with lifting capabilities of 55K lbs, a masted 966 loader with lifting capabilities of 20K lbs and a D6 Dozer.



Standard Coast Guard required safety gear includes but not limited to life slings, escape ladders, life rings, life vests, fire alarms.

Additional safety equipment includes wet dry suits, survival suits, mobile phones and radios, fire extinguishers and fire suppression systems, smoke and gas detection systems.



Other important equipment for the Unalag includes a 18' rigid hull inflatable skiff used for close-quarters position of the main vessel as well as ship to shore transport when needed.



The ship's lifeboat is a 16' skiff with a 40hp outboard motor which can be hoisted down to the water by a swing-out davit. The lifeboat is fully equipped with all necessary, Coast Guard approved gear.



The galley consists of a full kitchen that includes a propane stove, several refrigerators and freezer, dishwasher, sinks, food warming servers and even a deep fat fryer.



There is an oven and lots of storage space for cooking utensils, plates, bowls, silverware, etc. There is also the all important coffee maker.



With seating for 18 or more, the galley serves as a meeting area as well as a dining area.



Complete with communications capabilities and a flat screen television, the galley provides the comforts of home for passengers and crew.



Comfortable sleeping accommodations and bathroom/shower facilities for crew and 16 passengers.



Plenty of storage for crew and passenger's belongings as well as desks and inner-ship communication phones.



Washer and dryer on board.



An aerial view of the M/V Unalqa on one of many trips to Mertarvik, Alaska during the 2018/2019 construction to accommodate the residents of a neighboring village being evacuated due to rising water levels.



M/V Unalqa at the barge landing in Mertarvik, Alaska, dropping off a new power module, equipment and supplies.

M/V UNALQA Specifications

- Official #: 9765732
- Call Sign: WDH5909
- MMSI" 338718000
- Horsepower: 1,800 at 1,800 rpm
- Gross tonnage: 196 (GRT)
- Class: ABS Loadline
- Service: USCG Inspected Freight Service
- Built by: Nichols Brothers Boat Builders, Langley, WA
- Crew: 4-6, Berths: 16
- Dimensions:
 - Length: 150'
 - Beam: 50'
 - Depth: 8'
 - Loadline Draft: 5 feet, 1 ½ inches
- Speed:
 - Light draft: 9 knots (approx)
 - Loaded: 8 knots (approx)
- Communications & Navigation:
 - VHF, SSB radios, Inmarsat-C satellite, cellular telephone, 2 Furuno 3 cm RADAR, AIS and more
- Cargo Handling Features:
 - Freight capacity: 450 tons approx.
 - Deck cargo space: 4,950 SQ FT
- Deck strength: 1,000 lbs per square foot bow ramp: 27' long & 24' wide
- Engines: Three CAT C-18
- Reduction Gear: Twin Disc MGX5135 2.57:1
- Generators: Two John Deer 99KW
- Anchor Winch:
 - Two 2,365 lb. HHP Poole Anchors.
 - 15 shots - 1 ¼ inch chain
- Boom Crane:
 - One North Pacific MCF 2532
 - 32 foot, 20,000 lbs load capacity
- Push Gear: Two Schuyler 10'x8' push knees
- Fuel Oil Capacity: 63,660 gallons
- Lube Oil Capacity: 2,357 gal.
- Potable Water Capacity: 5,305 gal.
- Water Maker Capacity: 600 gal. /day
- Ballast Water Capacity: 210,054 gal.
- At Sea Endurance: 50 days

M/V Arctic Solution Vessel

This high speed vessel is able to transport both miscellaneous cargo, and wheeled or tracked construction equipment at speeds in excess of 30 knots. The bow gate is operated by hydraulic winches and gantry to raise and lower. In addition to cargo loads, this vessel is USCG compliant for passengers. Triple engines and water jets make this a powerful vehicle for shallow water beaching and operations. Designed as an Arctic oilfield support vessel, it meets all speed, draft and regulatory restrictions.



With a 62' shallow draft, and three 700hp motors, this near-shore, utility landing craft handles most sea conditions with no trouble.



The 10 foot wide bow gate can accommodate roll-on machinery that is usually transported by much larger shipping vessels.



With a 62' shallow draft, and three 700hp motors, this near-shore, utility landing craft handles most sea conditions with no trouble.



The 10 foot wide bow gate can accommodate roll-on machinery that is usually transported by much larger shipping vessels.

Specifications

- Designer: Coastwise Engineering
- Builder: Armstrong Marine
- Length: 62' – 0"
- Waterline Length: 56' – 0"
- Beam: 18' – 6"
- Construction Material: 5086 Aluminum
- Draft: lightship – 22" / Full Load – 28"
- Engines: 3 – 12 Liter Scania Marine Diesel 700hp
- Jets: 3 – UltraDynamic Ultrajet 410 Water jet
- Maximum Haul Weight: 40,000lbs Rolling COI
- Lightship Speed: 35 knots
- Cruising Speed (25k—30k load) 26 knots
- Fuel Capacity: 980 gallons
- GPH: Full Load 75
- Deck Dimensions: 16' w x 40' L (Forward of wheel-house)
- 10' 3" w x 10 (Under wheelhouse to stern)
- Bow Door Opening width: 10' – 0"
- COI 49 Passengers — 3 Modular Pass. Pods
- Hazmat Certified
- FLIR Thermal Imaging

Bowhead Transport also has a fleet of smaller, specialized, shallow-draft coastal and river lighterage vessels available to customers for their marine needs.



M/V Doctor Island: 32' Munson landing craft with a 660hp inboard motor.



18' Rigid Hull Inflatable skiff with a 90hp outboard motor.



M/V Crescent Island: 26' Munson landing craft with a 450hp inboard motor.



M/V Inutuq II: 30' shallow draft push boat.

Bowhead Transport, LLC was named for the great Bowhead whale which has been a time-honored traditional source of valuable sustenance to the Inupiat people for thousands of years.

Like our shareholders who created our parent company UIC, Bowhead holds to strong, traditional values that are at the core of our business principals.

Respect for our customers, a deep moral obligation to provide outstanding service that goes beyond expectation, and to provide that service at a fair and reasonable price.